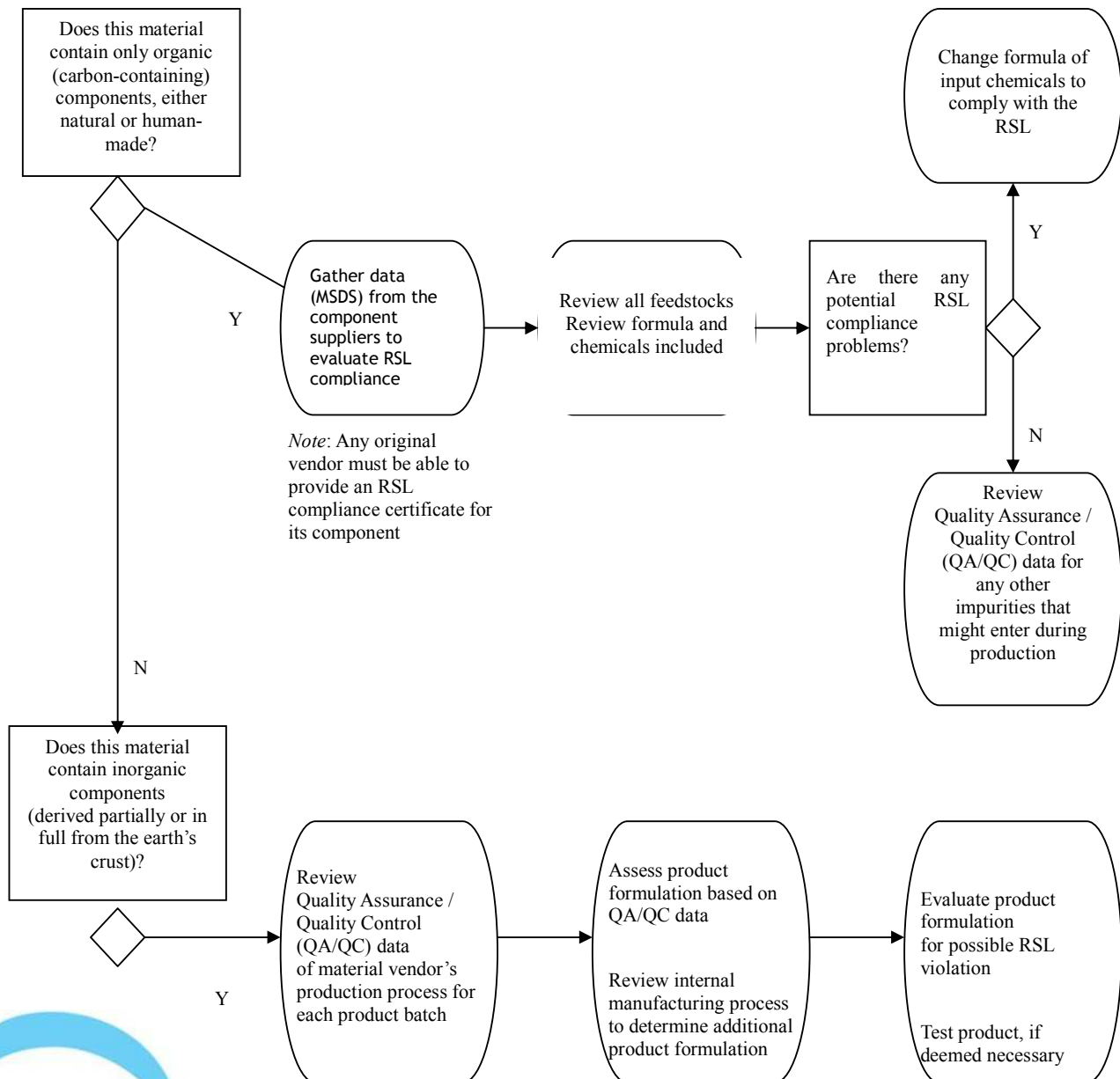


Technical Tuesdays

REF:TT/September 2011/WK 1

Restricted Substance in Textiles - an insight - part-2

As a continuation of RSL this week we will have a short look into the root cause analysis of a manufacturing process involving any chemical applied on to textile suspected to carry RSL



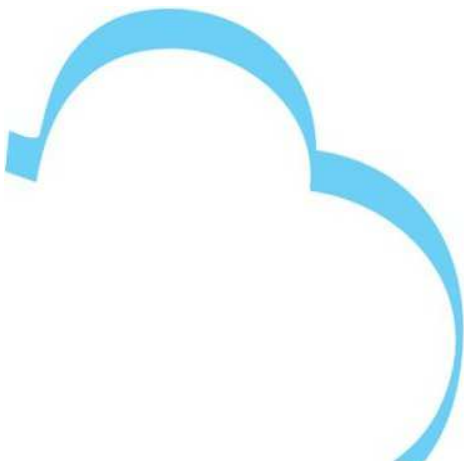
A knowledge sharing initiative of Resil Chemicals.
For queries, please write to arc@resil.com.
Also, visit www.resil.com



Technical Tuesdays

Next Week we will have a short look into the best practice to avoid RSL in the final substance.

“Have a happy week ahead”



*A knowledge sharing initiative of Resil Chemicals.
For queries, please write to arc@resil.com.
Also, visit www.resil.com*

